

# Like A City

Carlos Agredano / Anais Franco / David Horvitz / Amalia Irons  
Leona Johnson / Douglas Kirkland / Judee Sill / John Tottenham

Curated by Sophie Appel

September 13 - December 13, 2025



**Judee Sill**

*The Bird*, Undated (c. 1970s)

Ink drawing on paper

8 1/2 x 15 1/2 in (framed)



**John Tottenham**

*The Undesirables*, 2016

55 pencil drawings on paper

32 x 43 in (framed)



**Anais Franco**

*Acquired and Decaying Motif of Displacement*, 2025

Ceramics

19 x 18 1/2 x 15 in



**Leona Johnson**

*Vantage Point, 2025*

14 x 21 x 2 ft

Steel, foam, epoxy resin, paper,  
cables, converse high tops,  
cigarette butts, chewing gum



**David Horvitz**

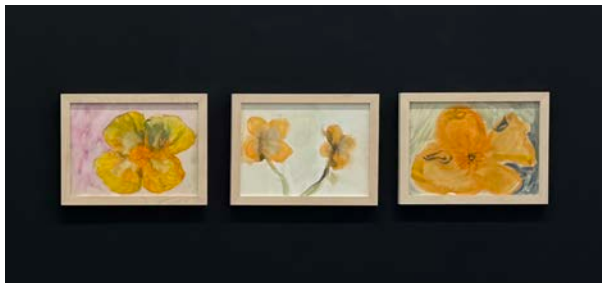
*Photographs From the Extreme  
Cardinal Points of Los Angeles*

**Hannah Tishkoff**

*LA Poem*

Risograph on newsprint

11 x 17 in



**David Horvitz**

*Longpré Ave #2, De Longpré Ave  
#9, De Longpré Ave #10, 2025*

Framed watercolor paintings  
12 3/4 x 16 1/2 in (each)



**David Horvitz**

*Paintings For Sale, 2025*

Acrylic on signboard

27 1/2 x 19 1/2 in (each)



**Anais Franco**  
*Ground Study*, 2025  
 Ceramics  
 24 1/3 x 24 1/3 in



**Douglas Kirkland**  
*Jeanne Moreau on Hollywood Boulevard*,  
 1970  
 Photograph  
 24 x 30 in



**David Horvitz**  
*Untitled*, 2025  
 9 postcards (postcard, garden  
 materials, tape)  
 5 1/2 x 3 1/3 in (each)



**Carlos Agredano**  
*Parasol*, 2023  
 Parasol  
 81 x 71 in



Anais Franco

*Crow*, 2025

Ceramics

11 x 5 in



Amalia Irons

Excerpt from *The Caretaker*, 2025

16mm film transferred to video

16:18